



**cubelock**

BUILD | SUPPLY | INSTALL



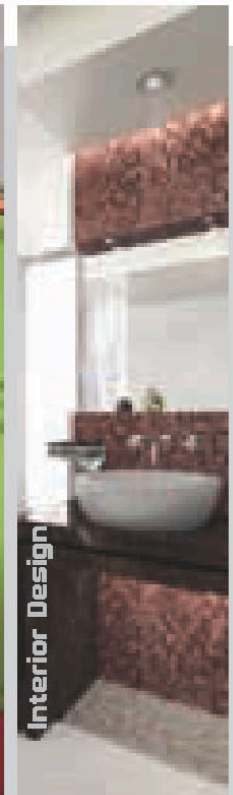
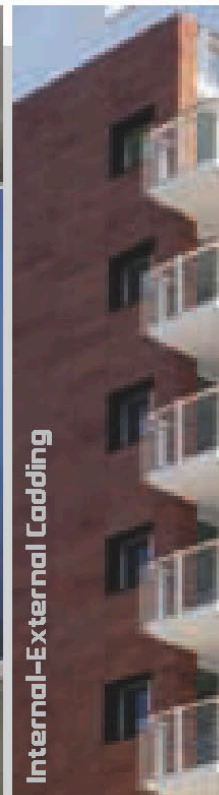
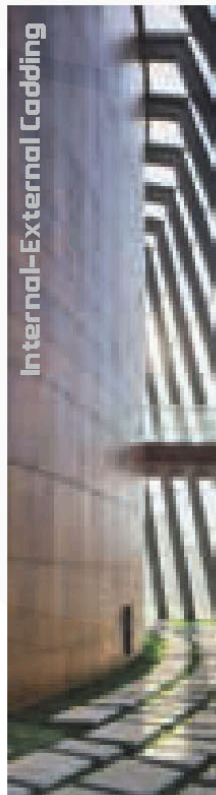
**CubeLock** was established as a prolongation for the Jordan based "Leaders Establishment" to serve the ever growing market of Abu Dhabi and the other GCC countries. With over than 15 years of experience in the design, manufacturing and installation of exterior and interior cladding, laminated toilet cubicles, lockers and seating benches, laboratory furniture and fume cupboards, CubeLock is committed to providing advanced, sustainable and innovative architectural solutions that contribute to the enrichment of the built environment.

**CubeLock** extended portfolio comprises several prestigious projects such as: the Stadium and sport City of Al Basrah, Iraq where the company was selected to provide a total of 4000m<sup>2</sup> of toilet cubicles, changing lockers and seating benches for the 65'000 seat stadium, the laboratory furniture for the Intensive Care unit of His Majesty the King of Bahrain in Awali Hospital in addition to a total of 120 successfully completed jobs in Jordan and other countries in the area.

**CubeLock** demonstrates high commitment to sustainability by providing solutions that reinforces the green built environment. Our accredited timber panel's suppliers are PEFC certified guaranteeing the collaboration in the sustainable maintenance and improvement of the forests and the environment.

Moreover, compact laminate is procured from FSC certified suppliers where Kraft papers contain a minimum of 20% of recycled paper that is free of Cadmium, Chrome Hexavalent, Lead, Mercury, Polybrominated Biphenils (PBB) and Polybrominated Diphenylether (PBDE). All of which comply with the requirements of international sustainability rating systems the likes of LEED and Estidama.

## Introduction



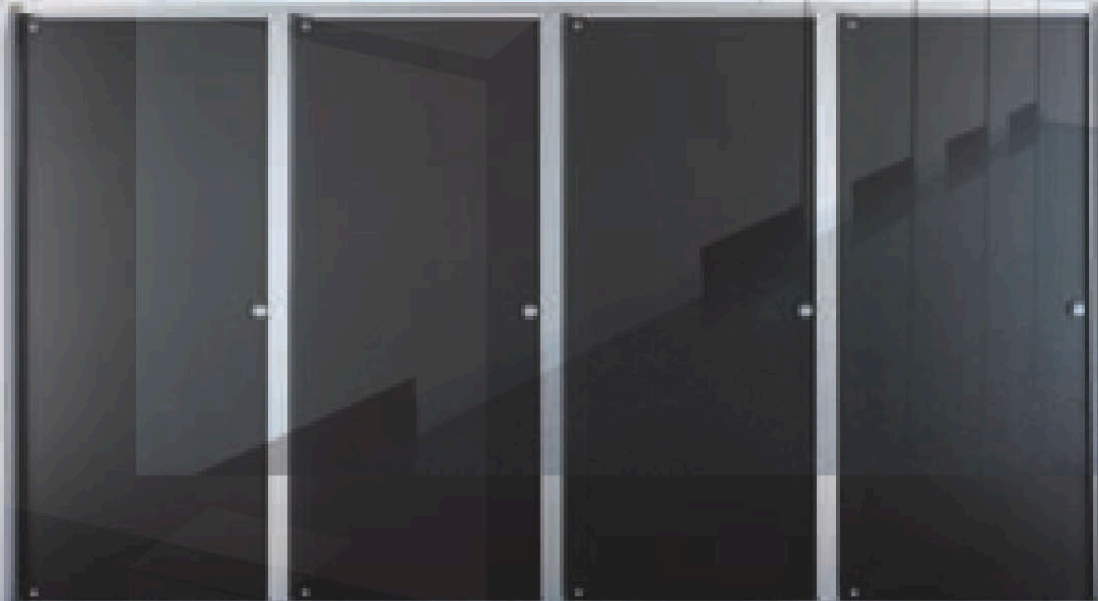
Especially designed to provide innovative architectural solutions for dry/wet areas where high levels of hygiene and durability are needed, CubeLock's line of laminated changing-room, shower & toilet cubicles is a maintenance-free, space saving and a flexible system for schools, hotels, gyms, office building, malls and hospitals.

All doors, pilasters & partitions are made of 13mm compact laminate panels based on 30% thermosetting resins, homogeneously reinforced with 70% cellulose fibers & manufactured under high pressure and temperature. Hardware & accessories are made of high corrosion resistant stainless steel, brushed finish, or high quality aluminum & strengthened nylon (Polyamide) specially made for 13 mm thin partitions. Fitting materials have a high thermal stability & high scratch resistance. Among the too many durability and esthetic features, our laminated toilet cubicles system is:

- Maintenance free
- Chemical resistant
- Hygienic and easy to clean
- Water and moisture resistant
- Impact, scratch and wear resistant
- Fire and cigarettes burns resistant
- Comply with the requirements of international sustainability rating systems the likes

of LEED and Estidama.

## Toilet Cubical





CubeLock's line of laminated lockers and seating benches is a practical, durable and versatile solution for a wide range of applications, from recreation and sporting environments, right through to educational, hospitality, commercial and industrial areas. The quality and strength of the laminated lockers and seating benches products ensure that the demands of high usage areas are surpassed without compromising style or aesthetics. Compact laminate, the material from which the system is made is fabricated to stand the test of time and bears most extreme conditions of moisture and humidity.

Doors are made of 13mm solid compact laminate panels. Dividers, top and bottom are made of 10mm while the back is made of 5mm panels. Hinges are heavy duty nickel plated with 240 opening angle. CubeLock's laminated lockers come in a standard height of 1830mm and vary in tier arrangements. Width and depth usually conform to standard measurements, although non-standard sizes might be available to comply with the client's requirements.

Seating benches top and back are made of 13mm compact laminate strips, frame tubes are made of epoxy powder coated steel frame supported with adjustable feet.

Multiple options and accessories are available in a wide range to enhance user convenience including:

- Diverse locking options
- Sloping tops
- Shelving, hanging rails, coat hooks and ventilation trims
- CNC number tag, logos or signs.

## Lockers & Seating Benches



**CubeLock** provides innovative façade cladding solutions using high-density stratified timber panel manufactured from kraft paper treated with resins thermoset under high pressure and temperature which is highly resistant to UV radiation and atmospheric agents.

**CubeLock** cladding panels finishes come in two options:

- **Natural Timber veneers:** panel finish is manufactured from natural timber where the warmth and quality of wood are clearly evident. Each panel reflecting unique characteristics such as changes in tone, color and highlights, with grain and knots.

- **Exterior Grade Compact Laminate:** Surface of Exterior grade compact laminate is enhanced by using an electron beam cure (EBC) system, the panels show superior endurance when it is exposed to UV radiation, direct sun light, rain, acid rain, wind, scratching and friction. CubeLock stratified timber panels are also used for the internal cladding of ceilings, walls, floors, and even for extreme wear environment such as counter tops, bathrooms and swimming pools.

**CubeLock** provides several fixation systems for the external and internal cladding:

- Exposed fastening system with screws or rivets.
- Hidden fastening system with hanger system.
- Hidden fastening system with adhesive.

## Internal & External Cladding





CubeLock'S Laboratory furniture systems are structured to meet the needs of the education, healthcare, pharmaceutical, clinical, research or industrial communities.

#### H-FRAME SYSTEM

consists of heavy-duty steel frames of 30x30x1.5mm square steel section fully carrying the worktops, and the under bench cabinets are mounted and fixed to epoxy powder coated frames and can be relocated with simple hand tools.

#### BASE FRAME SYSTEM

Consists of epoxy powder coated steel frames of 30x30x2 mm square steel section. The worktops are directly supported by the under-bench cabinets which are supported by base frames.


#### THE PLINTH SYSTEM

This system is rigid and changing the cabinets required dismantling the tops as the worktops are directly supported by the under-bench cabinets which are supported on wooden box carrying the cabinets. The cabinets are placed on an existing plinth or the cabinets are raised 100mm with integrated construction.

Working tops are made of laboratory grade compact laminate especially manufactured for applications where chemical resistance, mechanical strength, impact resistance, resistance to heat and cigarette burns, water and humidity resistance, and minimal maintenance are required.

## Laboratory Furniture and Fume Hoods





Well equipped with experienced architects and interior designer's team, **CubeLock** provides the services of Interior design, Fit-Out and Refurbishment specializing in office, commercial and residential environments. CubeLock offers a complete turnkey service starting with interior design up to fitting out premises taking full responsibility from instruction through to completion. Our range of services covers the full aspects of a complete design and fit-out project including:

- Interior Design
- 3d rendering and presentations
- Complete Fit-out
- Project Management budgeting and cost estimates
- Internal decoration
- Flooring
- Ceilings
- Partitioning Systems
- Lighting & Electrical
- Mechanical
- Signage
- Furnishings

## Interior Design & Fit-out Contracting



